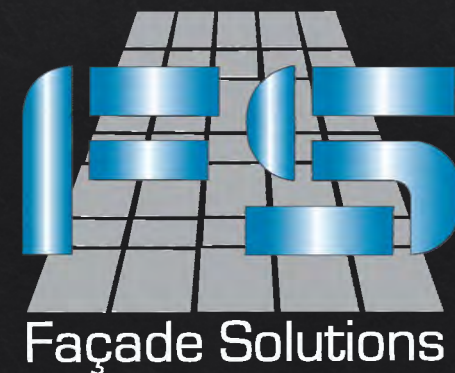




*Façade is not just our expertise but also our  
passion*



## Table of contents

- *Introduction* —————●
- *Who We Are* —————●
- *Mission & Vision Statement* ———●
- *Range of services* —————●
- *Fabrication Facilities* —————●
- *Projects* —————●
- *Organization Chart* —————●
- *Brands* —————●
- *Contact Us* —————●

1





## Introduction

---

Façade Solutions, was established towards the end of 2008 in the midst of the GCC construction boom to provide the highest quality of technical expertise in the field of Design, Engineering and Project Management services related to the building envelopes encompassing Aluminium curtain-wall, skylights, and cladding systems to owners, contractors and metal builders.

Since then, we have developed to become one of the most reputable and recognized Façade Contractors both at home and in the international market.

The service we offer differentiates itself from other commonly known competitors in that we offer expertise design and value engineered solutions to our clients and execute their projects to the highest standards and quality practise.

Such service is offered by a dedicated team with extensive hands on experience in the field.



## Who We Are

---

Façade Solutions is a Bahrain based company with international reach, with projects executed in more than 10 countries.

Our company is committed to provide integrated solutions in façade technologies, specialized in design, engineering and contracting services with an aim to exceed our clients' expectations with respect to professional services and quality.

We work collaboratively with project design team and contractors to provide solutions that are innovative, effective and unique to the extent of delivering the client needs and implementing the essence of architecture and design intend.

3

Façade Solutions has a wealth of international experience in the building envelope business, gained from exposure to high end projects developed by internationally recognized architects such as TILKE, ATKINS, AUKETT FITZROY, BENDY, ENIA ARCHITECTS and others.

As a result of the strategic decision to maintain the generated profit over the years invested in the business since its establishment, the company currently enjoys a very strong financial position, which is enabling it to finance its development and sustainable growth.





## Mission & Vision Statement

---

### Our Mission

To be recognized as professional service provider of high end quality building envelopes that cope with the latest developments in the facade technology, raising the quality standards and persistently setting a new benchmark in the facade engineering industry. We also strive to develop teams of fine ethics and high cooperative spirit.

### Our Vision

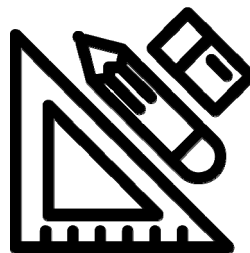
We aim to be a prominent global provider of facade contracting, design and engineering services and to play an influential role in the development of our industry.

## Our Range Of Services

---



**Façade Contracting  
services**



**Design & Engineering  
services**



**Façade Consulting  
services**

## Design & Engineering Services

---

- 1.1 Design concept
- 1.2 Shop-drawings
- 1.3 Structural computation notes
- 1.4 Fabrication drawings
- 1.5 Cutting lists
- 1.6 Procurement lists





## Façade Contracting Services

---

Façade solutions also provides turnkey solutions through direct contract with developer, main contractor and clients. In this case Façade solutions outsources the fabrication to approved partners in Bahrain and Dubai who manufacture the metal joineries, cladding and metal works in accordance with our fabrication drawings, cutting list and technical documentation under the scrutiny of our quality control engineers.

As for the site works, this is handled by our highly experiences installers and technicians who are deployed to the project site along with our project management team who closely monitor the work progress and quality while working hand in hand with the contractor's project team in charge.

Through such venture our clients enjoy the services of professionals handling the technical and the project management, along with the same workmanship quality they can expect from our partner at the most competitive price.



## Façade Consulting Services

---

Under this business FS provides the following pre tender and post tender services:

1. Preparation of tender drawings & specifications
2. Review of Shop-drawings, materials submittals and structural computation notes
3. Site inspection to ensure execution quality
4. Review of lab and field testing method statement and attending such tests

## Our Serviced Territories

---

### Middle East

Bahrain  
UAE  
KSA  
Oman  
Qatar  
Jordan  
Lebanon

### Africa

Nigeria  
Ethiopia  
Kenya  
Senegal  
Eritrea  
Uganda

### Asia

Malaysia  
Bangladesh  
Pakistan





## Completed Projects

---

## FAÇADE CONTRACTING

### Project value:

90,000,000 AED

### Project features:

52 Buildings all in all from Toilet building to Pit building around the circuit

More than 1,700 Shop-Drawings issued for the entire project

49,500 SQM of Curtain-wall, screens and doors

3,500 LM of Glass & Stainless steel railings installed in 6 weeks period

Around 250 Aluminium Fire rated doors installed on the project

### Completion period:

52 weeks from signing of contract (Completion 1 month ahead of time)

## F1 Circuit – ABU DHABI





## Radisson & Park Inn Hotels – ABU DHABI

### Project value:

37,000,000 AED

### Project features:

More than 700 L&S Doors & punch windows

2,600 LM of 600mm deep decorative fins around windows perimeter

2,800 SQM of curtain-wall

270 SQM of fixed point glazing (Spider glass)

354 Nos of Glass balcony dividers

280 lm of BriseSoleil

2,150 lm of Glass railing

### Completion period:

6 months



## Dahlaq Island Private resort - ERITREA

### **Project value:**

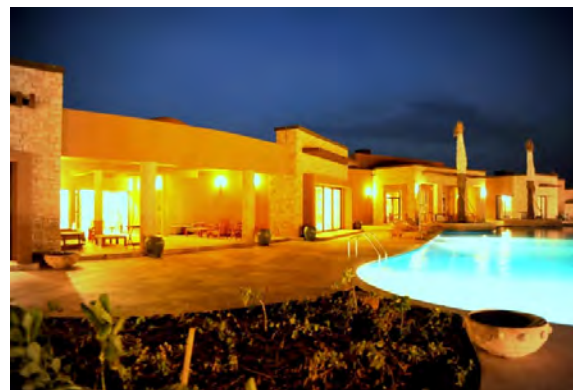
610,000 US\$

### **Completion period:**

Contract sign on 15/06/09, project completion on 30/07/09

### **Logistic challenge:**

Project is on a remote virgin Island in the red sea opposite Eritrea shores



## FAÇADE CONTRACTING

### EKO Tower - NIGERIA

#### **Project scope:**

Design & execution of structural glazing Unitized Curtain-wall

Conducted and passed air, static and dynamic water test, thermal cycling and wind resistance tests

Design & execution of Ventilated open joints ACP cladding





## Al Nagfa Mall – AL AIN, UAE

### **Project features:**

4 Dome Skylights each 14m Diameter

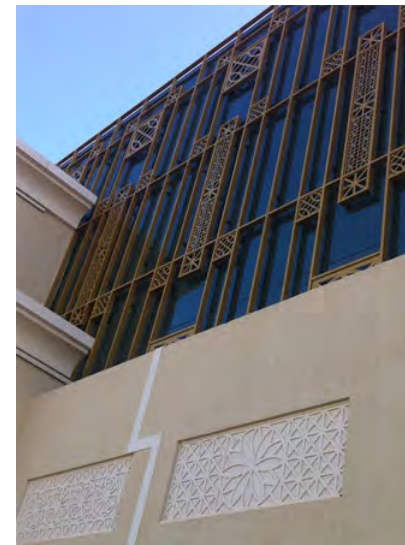
1 Pitched roof skylight 32m wide x 63m long

7,900 SQM of curtain-wall & glazed elements

Custom design aluminum trellis and screens

Custom design external aluminum railing

1,500 LM of internal glass railing

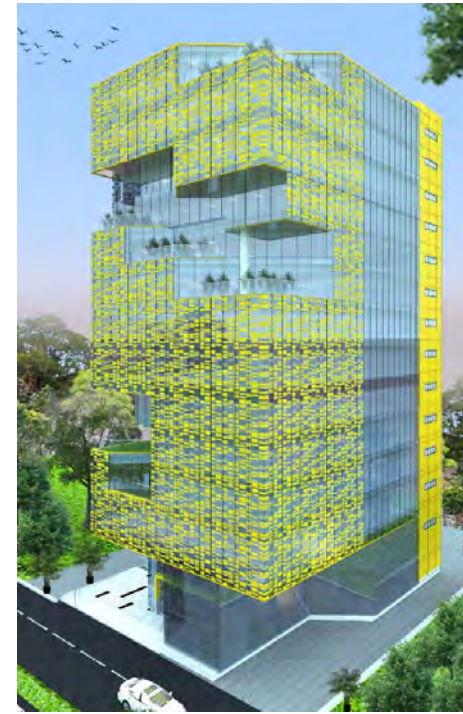




## Nassa Diamond Building – BANGLADESH

### Design perspectives

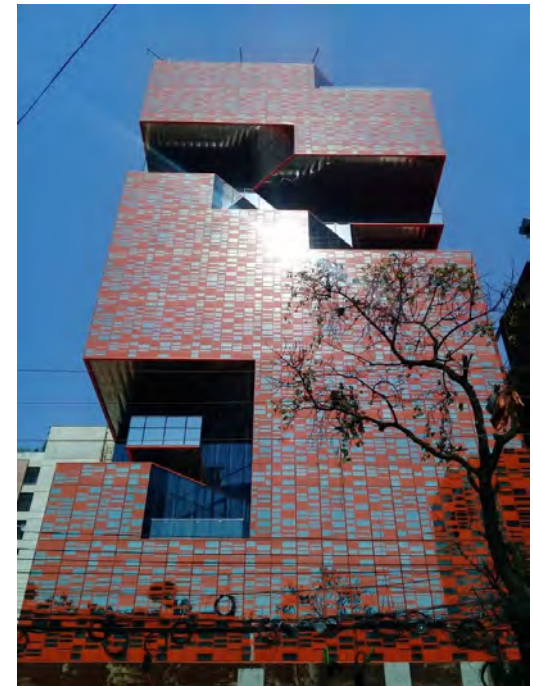
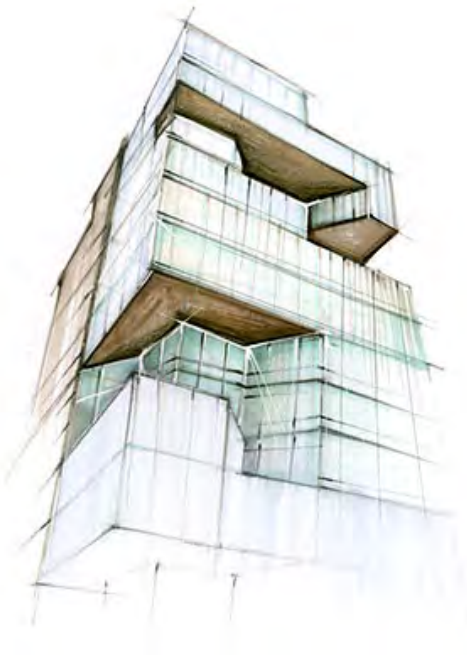
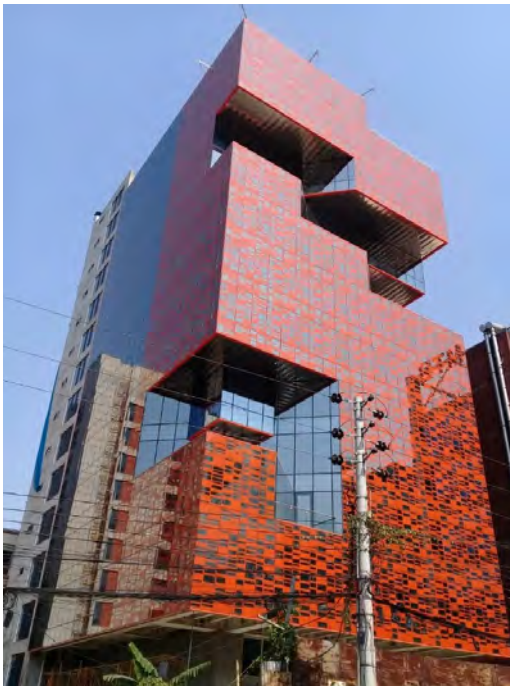
17



## Nassa Diamond Building – BANGLADESH

### **Project scope:**

Curtain wall and stainless steel cladding





## UAE Embassy – LEBANON

### Project scope:

Aluminium curtain wall, windows, doors, glass partitions, glass partitions with venetian blinds ,louvers , insect mesh, skylight, SS gratings & SS brackets

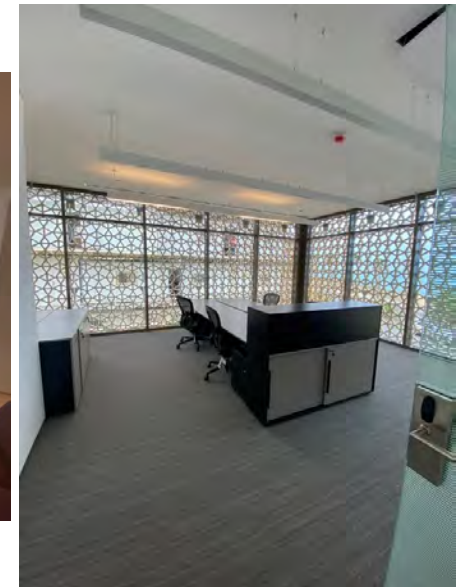
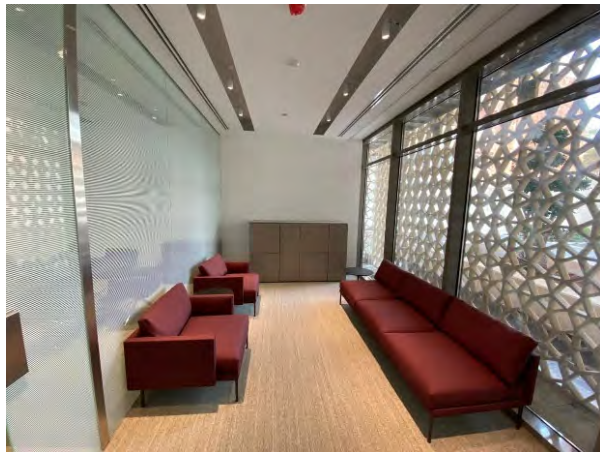
19



## UAE Embassy – LEBANON

### **Project scope:**

Aluminium Bullet proof curtain wall, windows, doors, glass partitions, glass partitions with venetian blinds ,louvers , insect mesh, skylight, SS gratings & SS brackets





## African Union Peace & Security Building– Ethiopia

### Project scope:

Doors & windows, curtain wall and automatic sliding doors



## Dakkar Intercontinental Hotel - SENEGAL

**Project scope: (Ongoing)**

Doors & windows, curtain Wall, aluminium composite cladding, canopy and pergola



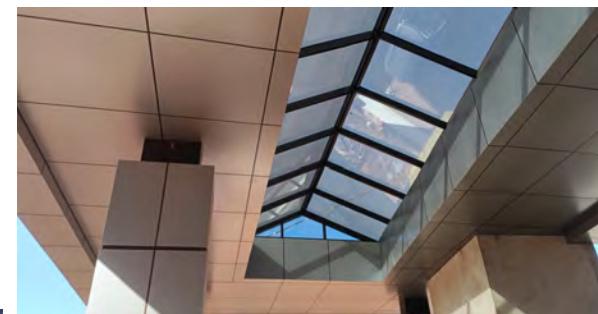
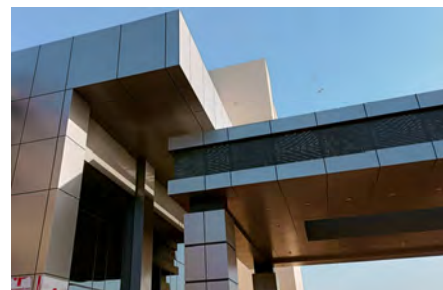


## Dakkar Intercontinental Hotel - SENEGAL

**Project scope: (Ongoing)**

Doors & windows, curtain Wall, aluminium composite cladding, canopy and pergola

23



## **Hamala Mixed Use Development - BAHRAIN**

**Decorative Metal screens**

**Shop-fronts**

**Curtain-wall**

**Doors & Windows**

**Railing**





## Hamala Mixed Use Development - BAHRAIN

Decorative Metal screens

Shop-fronts

Curtain-wall

Doors & Windows

Railing



## Hamala Mixed Use Development - BAHRAIN

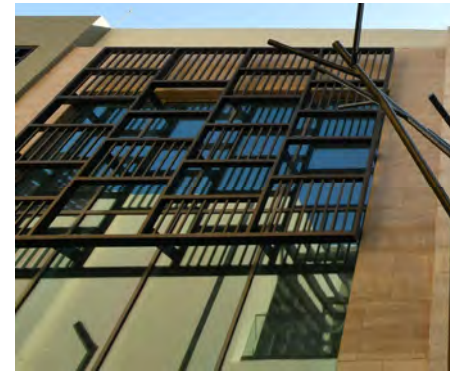
**Decorative Metal screens**



**Shop-fronts**



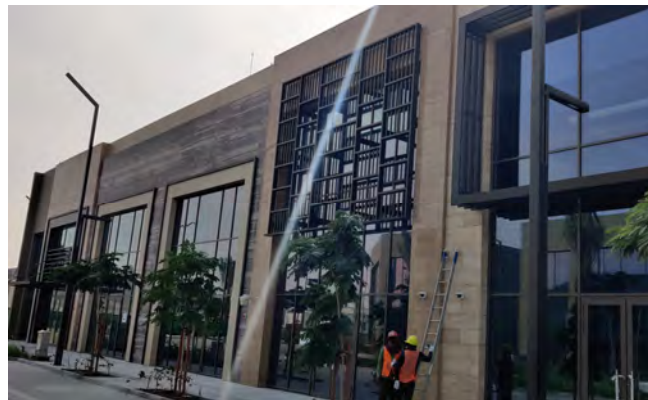
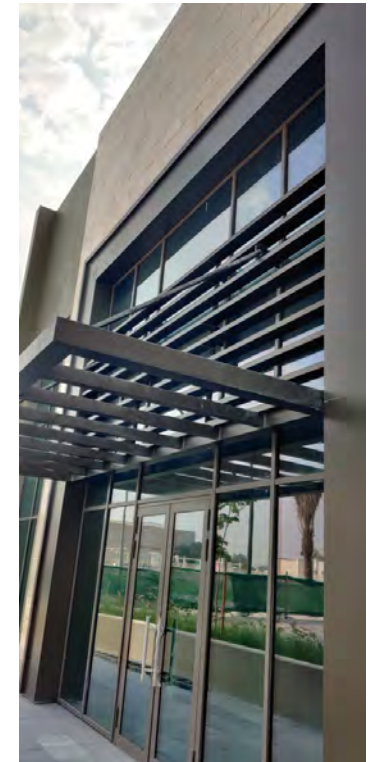
**Curtain-wall**



**Doors & Windows**



**Railing**





## F&B - BAHRAIN

### Project scope:

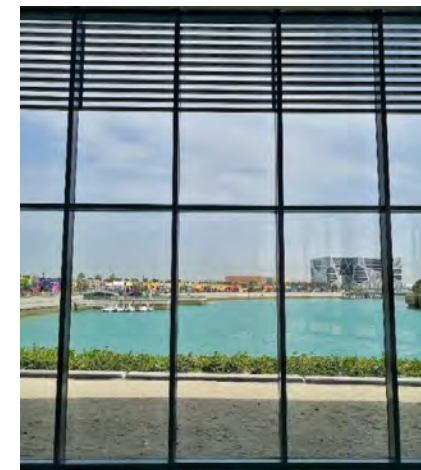
Curtain-wall, ACP cladding, solid perforated aluminum cladding, glass railing, steel canopies, metal railing, Brick-slip cladding & EFS plastered wall



## F&B Park Building - BAHRAIN

### **Project scope:**

Curtain-wall, ACP cladding, solid perforated aluminum cladding, glass railing, steel canopies, metal railing, Brick-slip cladding & EFS plastered wall





## Bus & Water Taxi Shelter – BAHRAIN BAY

Design Perspective

29



## Bus & Water Taxi Shelter – BAHRAIN BAY

### Project scope:

Glazing, cladding, perforated cladding, auto doors





## Barwa Financial District - QATAR

### Project features:

Custom design glass cladding with stainless steel trims and skirting

Frameless screens and doors with access control for Lift lobbies

Custom design demountable louvers for primary sub-station

copper cladding and frameless vestibule for auditorium building



## Alghalya residence – BAHRAIN

### Project features:

Curtain walls, windows, railings, sliding doors





## Meisei Restaurant – BAHRAIN

### Project features:

Curtain wall

Louvres

Internal glass partitions

33



## Cebarco Tower – BAHRAIN

### Project features:

Main building carpark and railings



## Bahrain International Circuit - BAHRAIN

### **Project scope:**

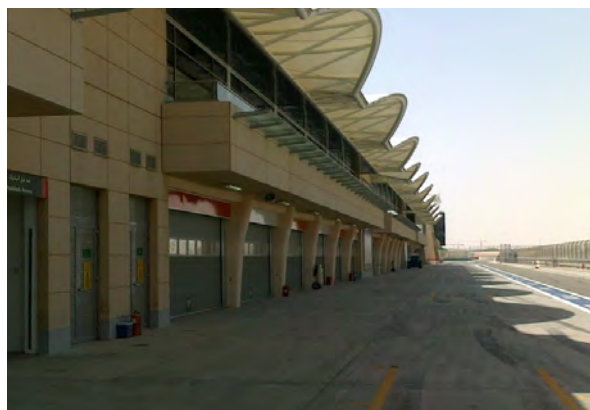
Supply and fix 250 LM of Glass railing

Supply and fix 950 SQM of aluminium curtain-wall to the paddocks lounges

Design, supply and fix aluminium cladding and sun-breakers for the medical center

Design, supply and fix internal partition for the race control room

Design, supply and fix 288 LM long glass canopy above the pit lane





## MSD Building - BAHRAIN

### Project features:

Canopy, windows, curtain wall



## Nawaf Showroom - BAHRAIN

### Project scope:

Spider glass curtain-wall, terracotto cladding, doors and windows

37

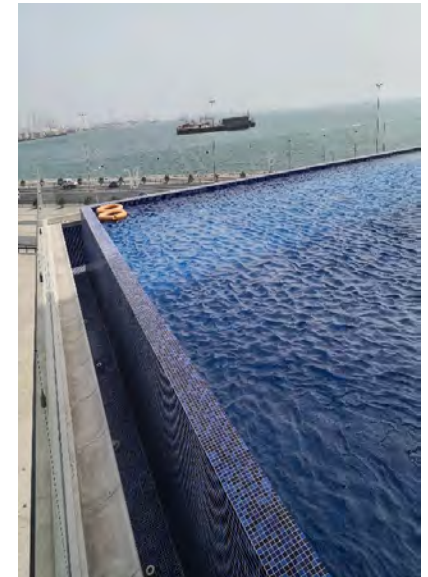
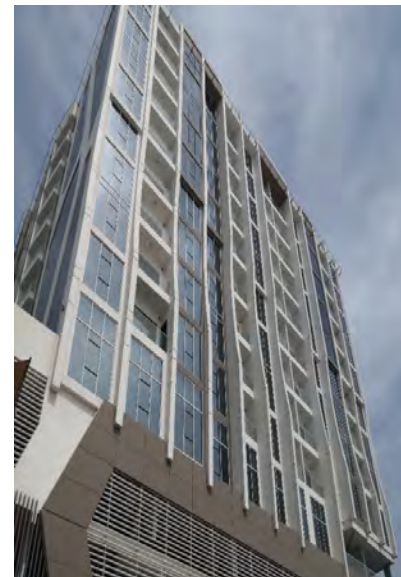




## Hidd Heights – BAHRAIN

### **Project scope:**

Doors & windows, curtain wall, railing, cladding



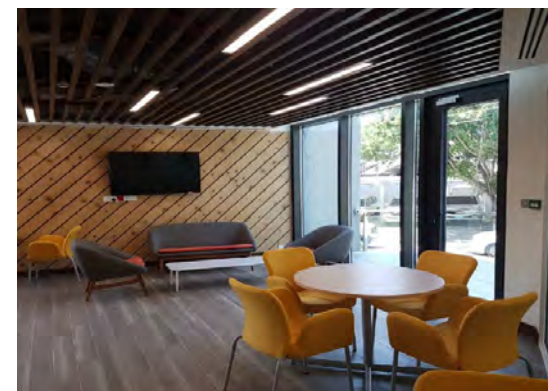
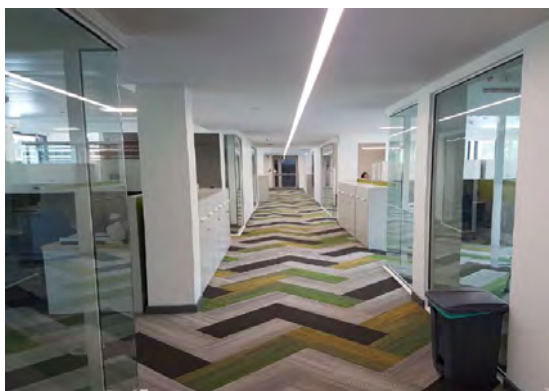


## World Bank HQ – PAKISTAN

### Project scope:

Blast resistant doors & windows

39



## FAÇADE CONTRACTING

### Twin Residential Building – ABU DHABI

#### **Project scope:**

Doors & windows, cladding, railing, pergolas



### Violet Residence Building - BAHRAIN

#### **Project scope:**

Doors & windows, curtain wall, railing, cladding





## Marassi Galeria - BAHRAIN

### Project scope:

Customized Aluminium Trims and Deployed Mesh

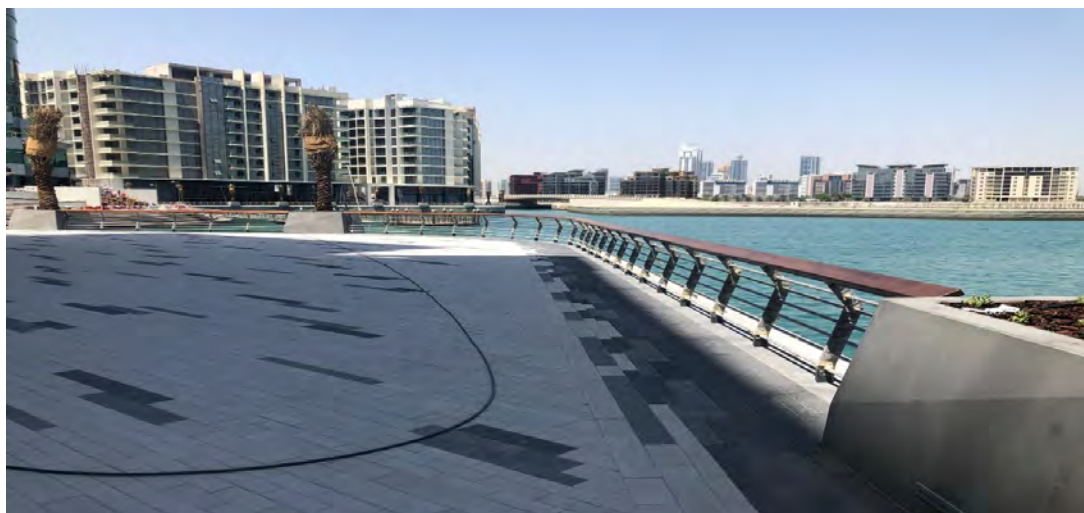




## Harbour Row - BAHRAIN

### **Project scope:**

Customized Aluminium Handrails

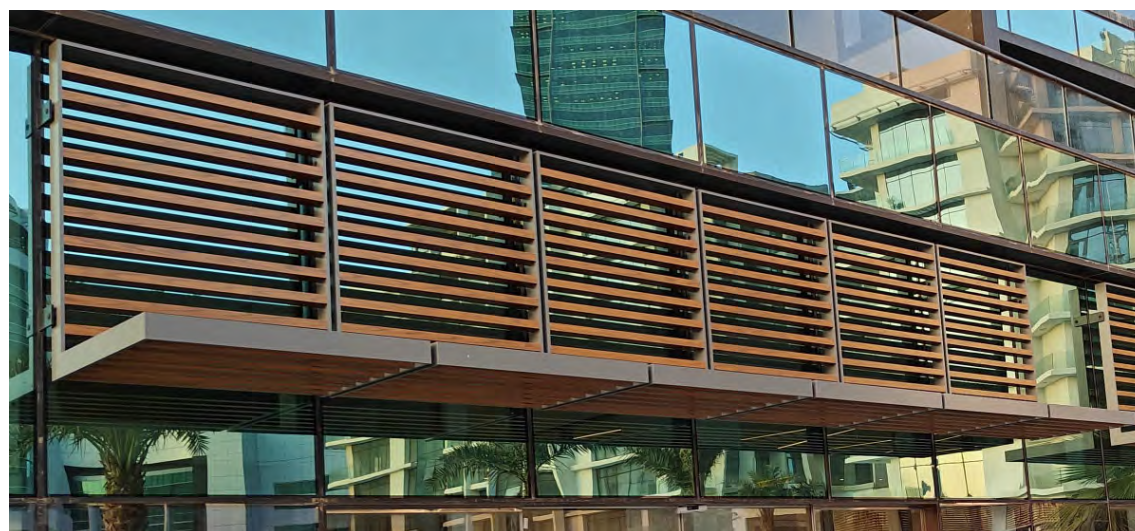


## Harbour Heights- BAHRAIN

### **Project scope:**

Customized Aluminium Screens, Partitions and Handrails

43

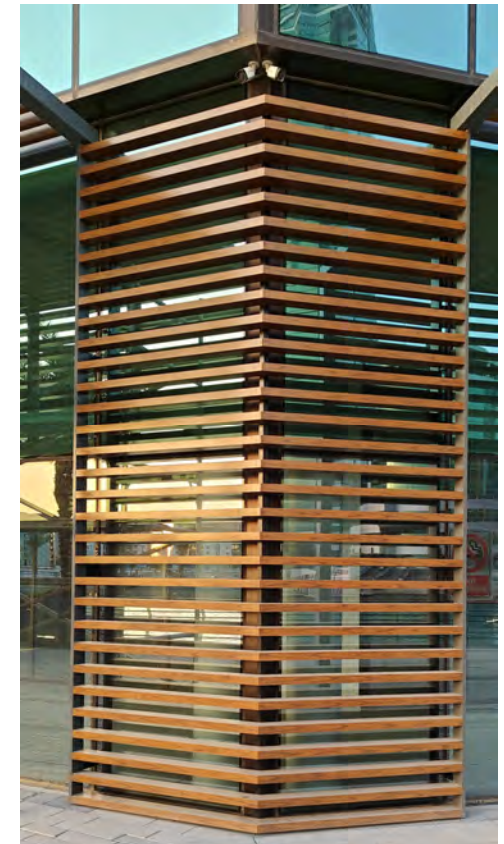




## Harbour Heights- BAHRAIN

### **Project scope:**

Customized Aluminium Screens, Partitions and Handrails



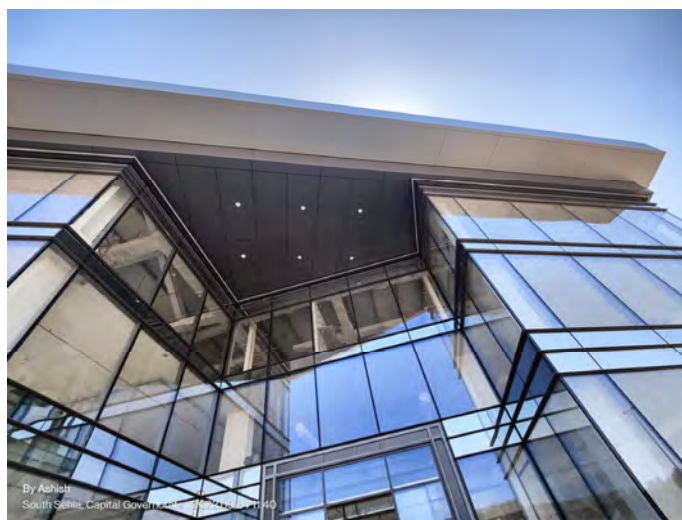


## Showroom at Sehla for Mr. Bukanan- BAHRAIN

### Project scope:

Curtain walls, Doors & windows, Cladding, Handrails and Frameless Lift Enclosure

45



## TURNKEY PROJECT

# Dragster Race Control - BIC BAHRAIN

### Project Scope:

Architectural design

Construction project management

Design & Execution of the glazing works offering 360 degree panoramic view over the circuit

Custom design aluminum sun-breakers which reduced solar heat gain by 60%

Aluminium composite cladding

### Completion period:

From 12 Dec 2010 -till 15 Feb 2011 (2 Months)



# VILLAS

---

47





## VVIP Villa in RIYADH - KSA



48



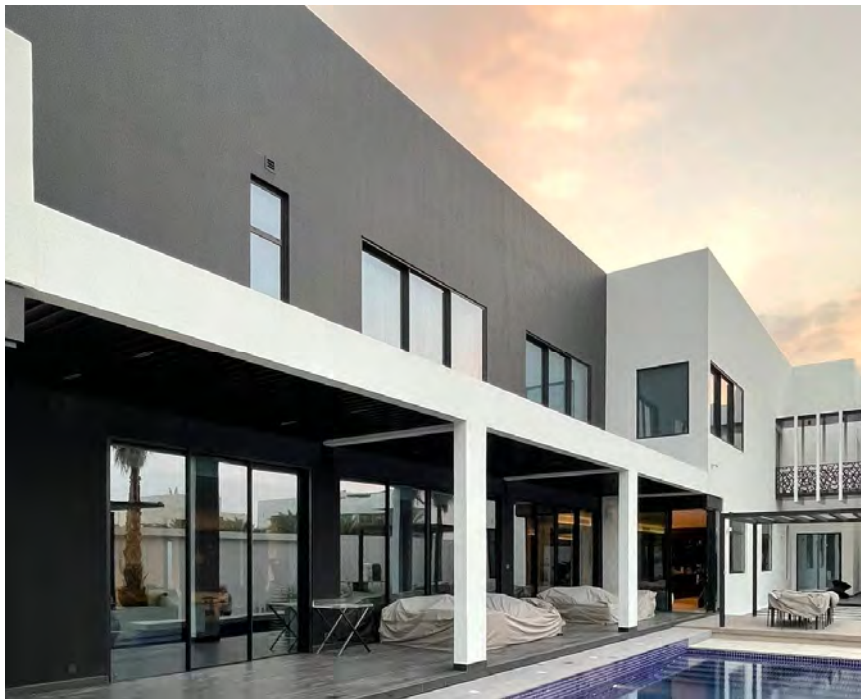


## VVIP Villa in RIYADH - KSA

49



## Villa for Mr. Ehab Al Sharif - BAHRAIN

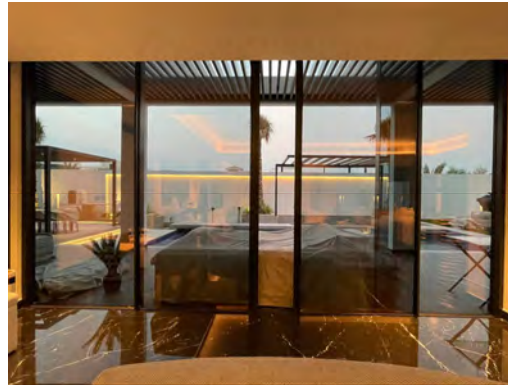




## Villa for Mr. Ehab Al Sharif - BAHRAIN



51





## Villa for Mr. Dheya- BAHRAIN

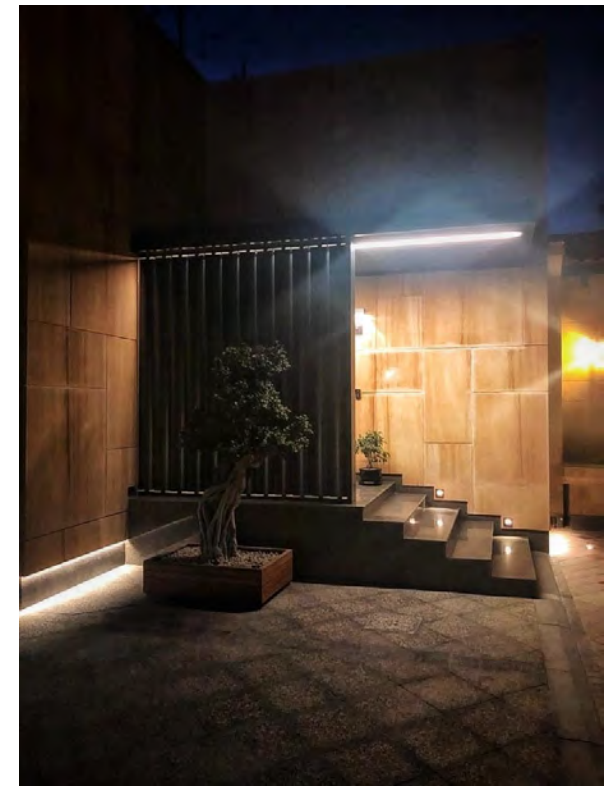




## VIP Villa & Majlis - BAHRAIN



53

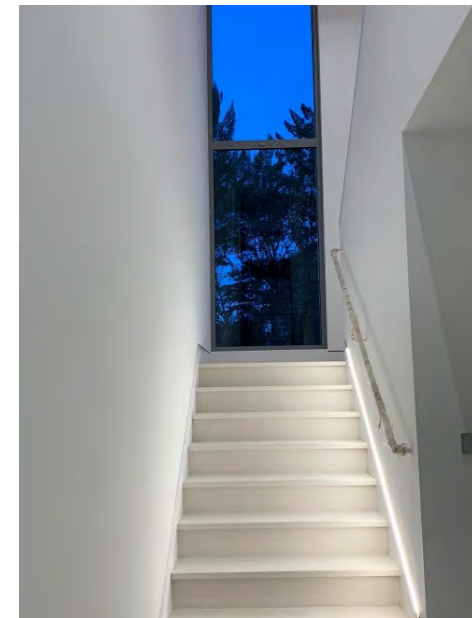




## The Constellation Project - KENYA



54



## Villa for Dr. Samer Aljishi- BAHRAIN

55





## Villa for Mr. Hani Al-Aali - BAHRAIN







**Ongoing Projects**

---

## Amwaj Beachfront & Townhouses - BAHRAIN

### Project features: (Ongoing)

Curtain Walls, Sliding doors, Windows, Aluminium Pergola, Glass handrails



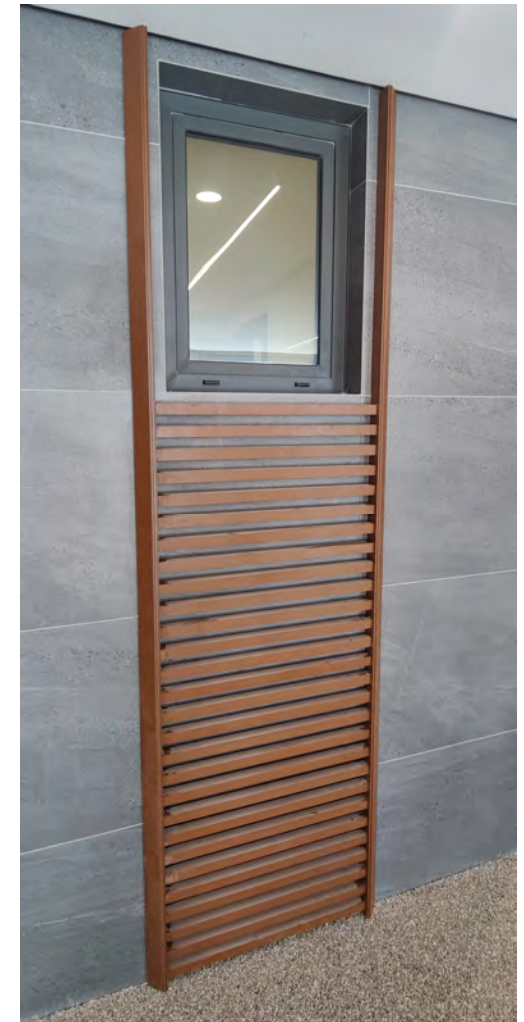
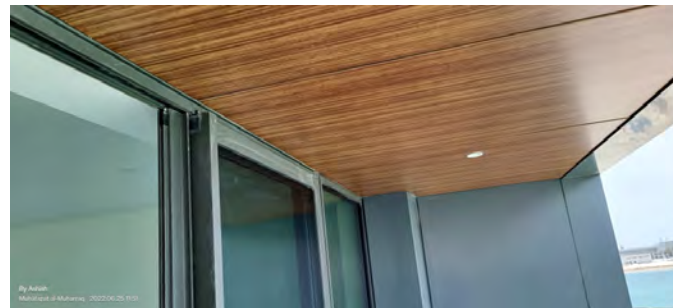
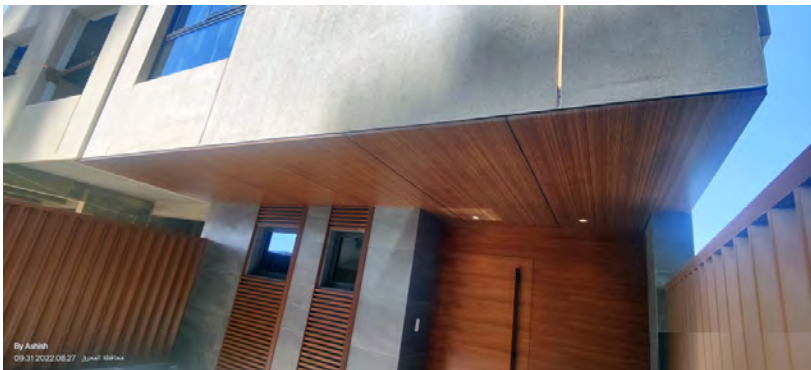


## Amwaj Beachfront & Townhouses - BAHRAIN

**Project features: (Ongoing)**

Curtain Walls, Sliding doors, Windows, Aluminium Pergola, Glass handrails

59





## Layan - BAHRAIN

### **Project features: (Ongoing)**

Aluminium curtain walls, hinged doors, sliding doors, windows, aluminium louver screens, glass handrails



## Al Sidra Villas - BAHRAIN

61





## Design & Engineering Projects

---





## Lusail Office Tower - QATAR

### Project scope:

Curtain wall, Doors, windows, ACP cladding, Steel canopy, Louver, lattice

63



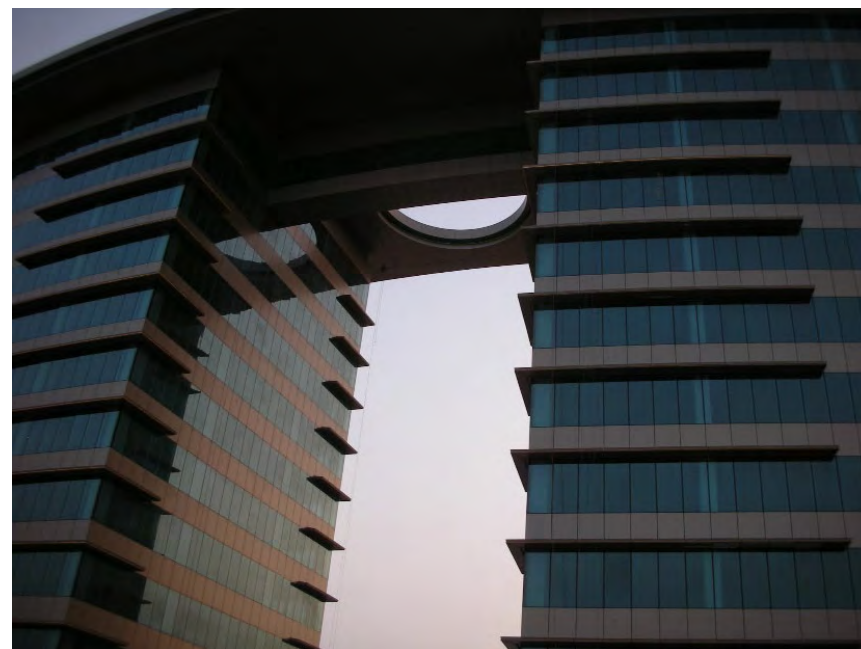
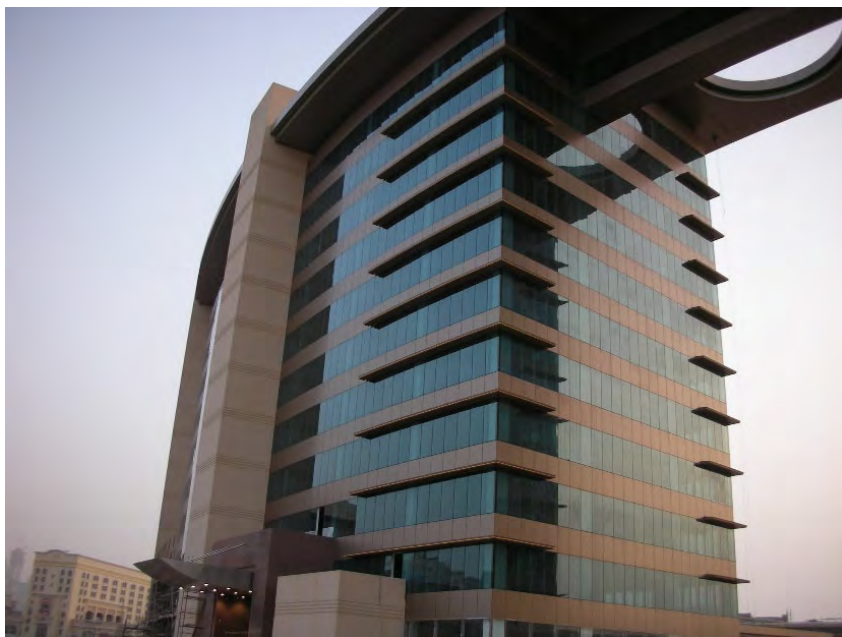
## Sheikh Hamdan Awards Buildings - DUBAI

### **Project scope:**

Design of 4-way structural glazing Curtain-wall

Custom design for decorative fins fitted in Curtain-wall

Conducted and passed air, static and dynamic water test, thermal cycling and wind resistance tests





## University College Of Technology - SIBU-MALAYSIA

### Project features:

Consists of 09 different buildings with the following major scope of works:

8,500 SQM of stick curtain-wall

3,000 SQM of sloped stick curtain-wall

34x15m trapezoidal spider glazed space frame skylight

Frameless glass lift encloser

Slope glazed skylights

### Completion period:

Entire Design & Engineering Scope of work for all buildings completed within four months time frame



## 2CDE Dubai Marina Tower - DUBAI

### **Project features:**

One of most complicated façade design due to the variety of components in the façade

10,500 SQM of curtain-wall with custom design fins and LED lighting

1,700 LM of glass & SS railing

7,100 SQM of aluminium composite panels cladding





## Riyadh Metro - KSA

### Project scope:

9 stations & west depot on line 3

Curtain wall, aluminium cladding, louver, automatic sliding doors

67



## Marsa Seef – DUBAI





## Twin Diplomatic Towers - BAHRAIN



## Almaryah Central – ABU DHABI

Decorative Metal screens

Shop-fronts

Blast resistant Curtain-wall

Railing





## Durrat Marina 360 Tower – BAHRAIN

### **Project scope:**

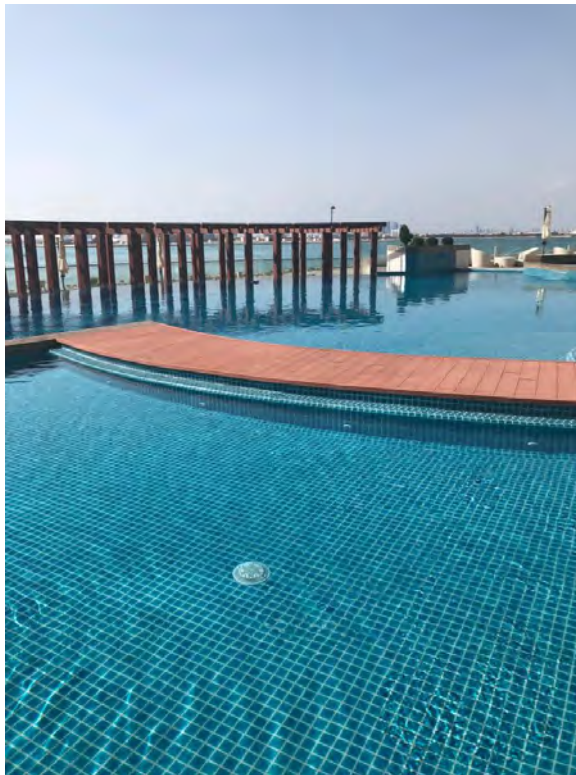
Glass handrail for retaining glass wall



## Treasure Dilmunia – BAHRAIN

### **Project scope:**

Swimming pool retaining glass wall





## Forbes Tower – BAHRAIN



## Spark Tower - BAHRAIN



## Busaiteen One – BAHRAIN

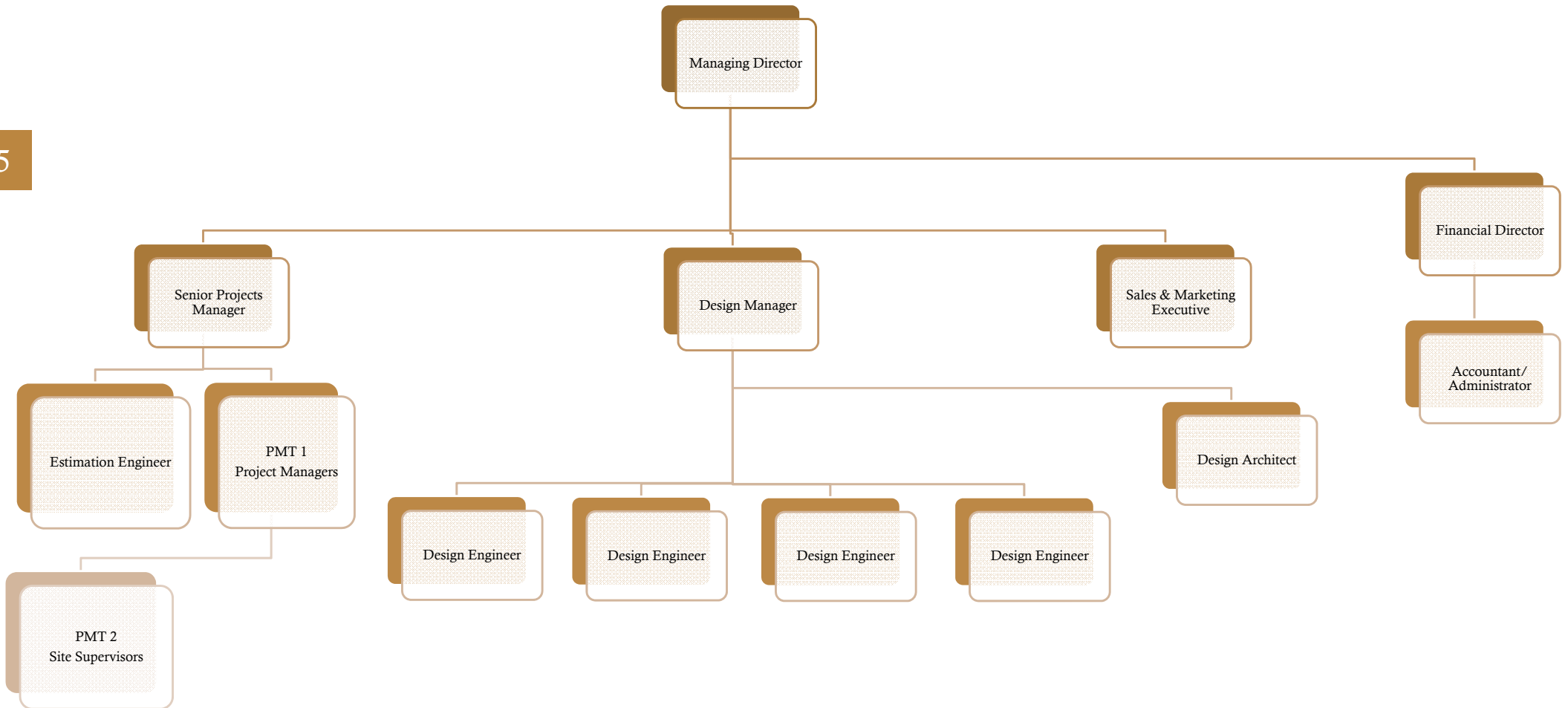


## Busaiteen Plus - BAHRAIN





# Organization Chart



## Brands



SCHÜCO





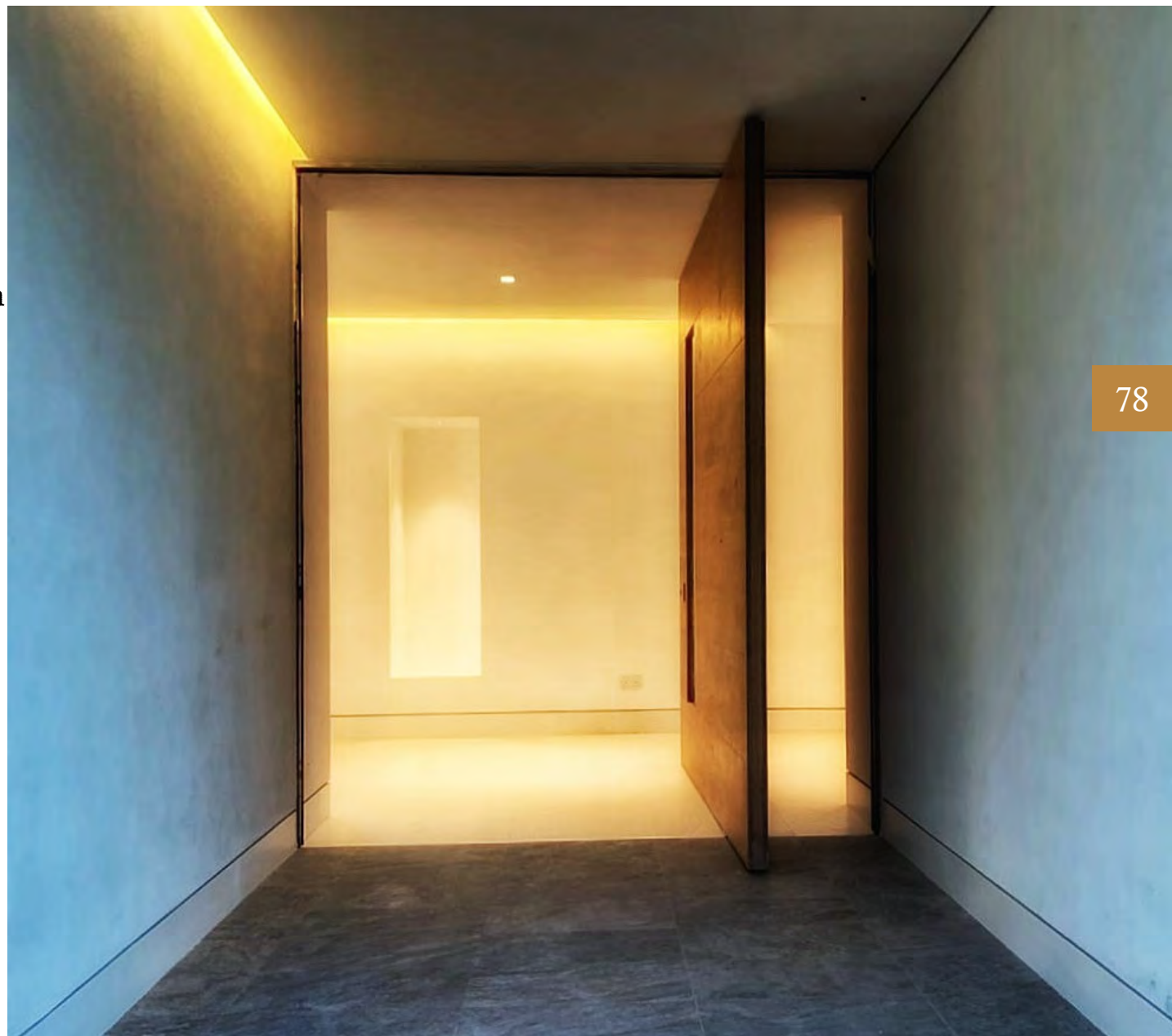
## Brands



## Contact Us

---

- **Office 94, Building 3232, Road 4654**
- **Block 346, Manama Seafront – Bahrain**
- **Tel: 973-17 591654**
- **Fax: 973-17 594021**
- **e-mail: [info@facadesolutions.org](mailto:info@facadesolutions.org)**



**Facadesolutions.org**